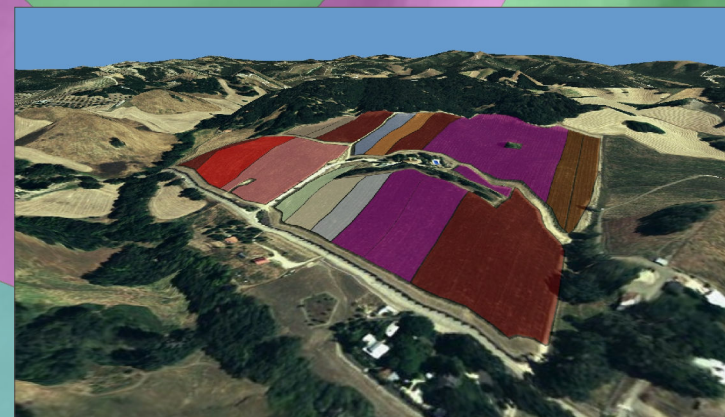
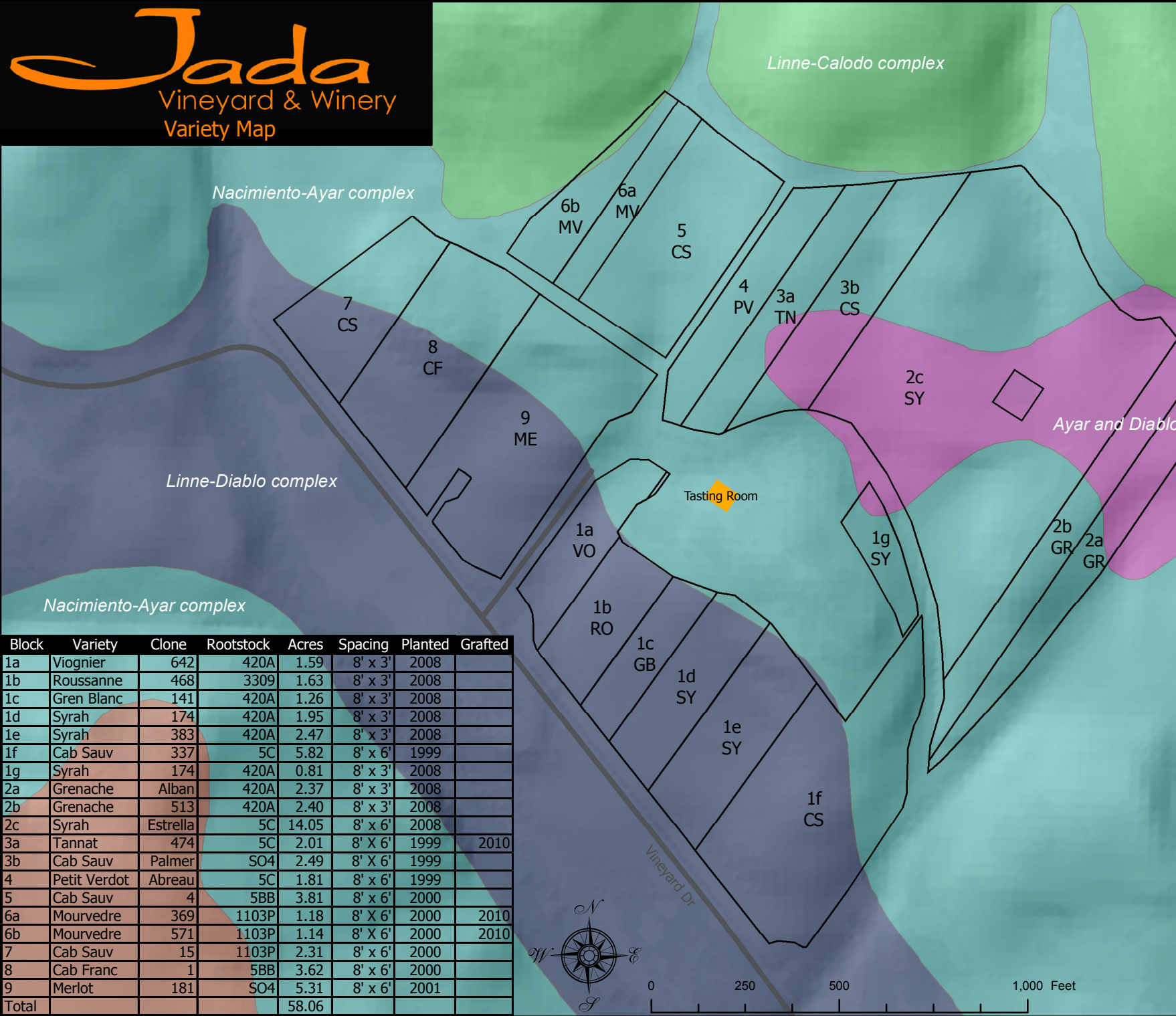
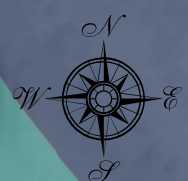


Jada

Vineyard & Winery
Variety Map



Block	Variety	Clone	Rootstock	Acres	Spacing	Planted	Grafted
1a	Viognier	642	420A	1.59	8' x 3'	2008	
1b	Roussanne	468	3309	1.63	8' x 3'	2008	
1c	Gren Blanc	141	420A	1.26	8' x 3'	2008	
1d	Syrah	174	420A	1.95	8' x 3'	2008	
1e	Syrah	383	420A	2.47	8' x 3'	2008	
1f	Cab Sauv	337	5C	5.82	8' x 6'	1999	
1g	Syrah	174	420A	0.81	8' x 3'	2008	
2a	Grenache	Alban	420A	2.37	8' x 3'	2008	
2b	Grenache	513	420A	2.40	8' x 3'	2008	
2c	Syrah	Estrella	5C	14.05	8' x 6'	2008	
3a	Tannat	474	5C	2.01	8' X 6'	1999	2010
3b	Cab Sauv	Palmer	SO4	2.49	8' X 6'	1999	
4	Petit Verdot	Abreau	5C	1.81	8' x 6'	1999	
5	Cab Sauv	4	5BB	3.81	8' x 6'	2000	
6a	Mourvedre	369	1103P	1.18	8' X 6'	2000	2010
6b	Mourvedre	571	1103P	1.14	8' X 6'	2000	2010
7	Cab Sauv	15	1103P	2.31	8' x 6'	2000	
8	Cab Franc	1	5BB	3.62	8' x 6'	2000	
9	Merlot	181	SO4	5.31	8' x 6'	2001	
Total				58.06			



0 250 500 1,000 Feet

Legend

NRCS Soils

- 106-Arbuckle-San Ysidro complex
- 110-Ayar and Diablo soils
- 153-Linne-Calodo complex
- 155-Linne-Diablo complex
- 156-Linne-Zakme complex
- 178-Nacimiento-Ayar complex